



**Beaufort County**  
**Public Works**  
**Stormwater Infrastructure**  
*Project Summary*

**Project Summary:** Mint Farm Subdivision Pond

**Activity:** Routine/Preventive Maintenance

**Narrative Description of Project:**

Dewatered pond to safe elevation.

**Completion:** Jun-15

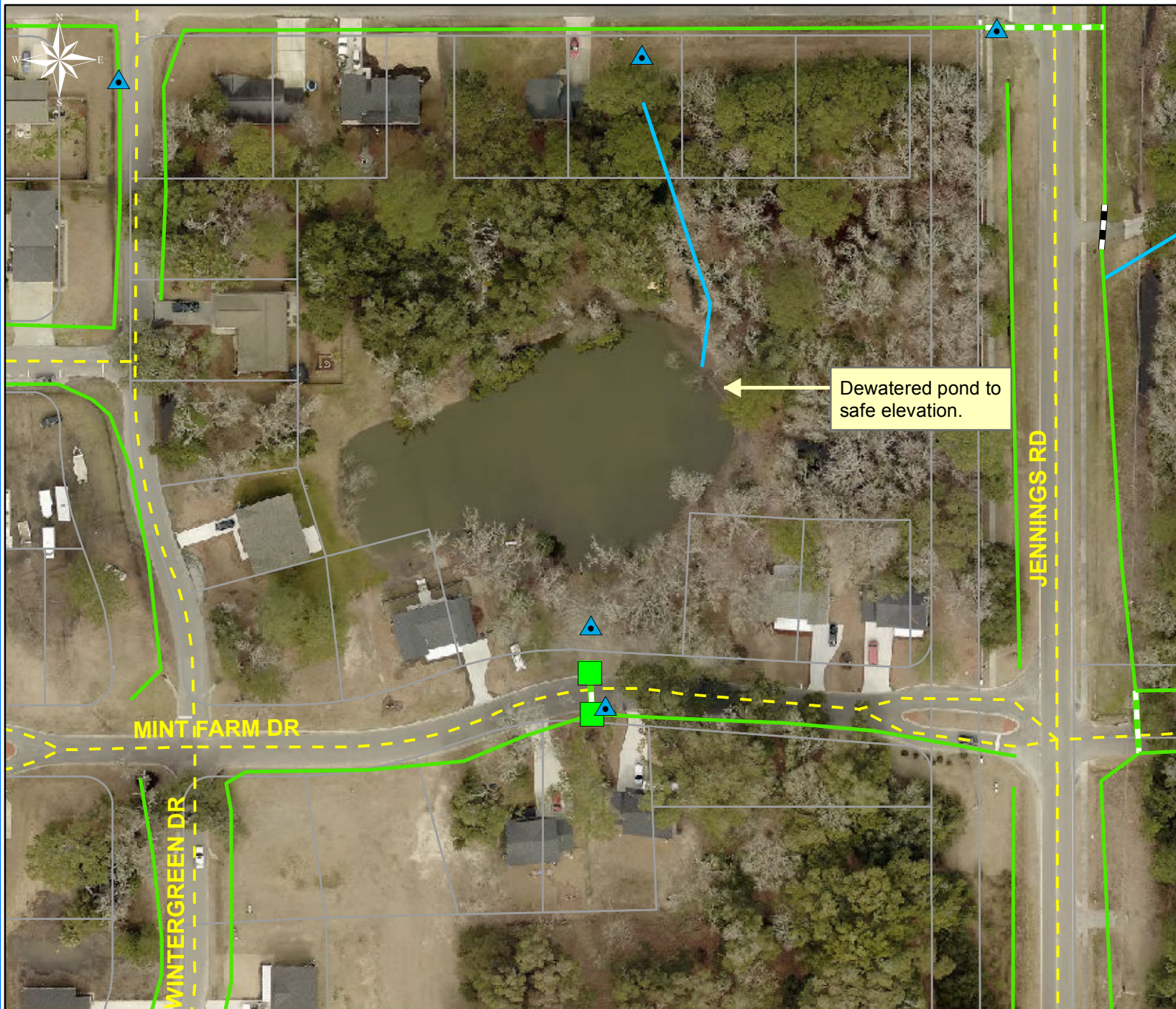
<b>2015-321 / Mint Farm Subdivision Pond</b>	<b>Labor Hours</b>	<b>Labor Cost</b>	<b>Equipment Cost</b>	<b>Material Cost</b>	<b>Contractor Cost</b>	<b>Indirect Labor</b>	<b>Total Cost</b>
AUDIT / Audit Project	0.5	\$11.75	\$0.00	\$0.00	\$0.00	\$6.62	\$18.36
DWP / Dewatered Pond	84.0	\$1,962.97	\$95.90	\$43.07	\$0.00	\$1,305.67	\$3,407.61
ONJV / Onsite Job Visit	9.0	\$297.42	\$32.02	\$22.70	\$0.00	\$195.53	\$547.67
PRRECON / Project Reconnaissance	2.0	\$59.68	\$7.08	\$2.27	\$0.00	\$36.46	\$105.49
<b>2015-321 / Mint Farm Subdivision Pond Sub Total</b>	<b>95.5</b>	<b>\$2,331.82</b>	<b>\$135.00</b>	<b>\$68.04</b>	<b>\$0.00</b>	<b>\$1,544.27</b>	<b>\$4,079.13</b>
<b>Grand Total</b>	<b>95.5</b>	<b>\$2,331.82</b>	<b>\$135.00</b>	<b>\$68.04</b>	<b>\$0.00</b>	<b>\$1,544.27</b>	<b>\$4,079.13</b>

Before



After





Project: Mint Farm S subdivision Pond

Activity: Routine/ Preventive Maintenance

Project #: 2015-321

Township: Port Royal Island

Completed: March 2015

Dewatered pond to safe elevation.

Legend	
Drainage Type	
	Access Pipe
	Bleeder Pipe
	Channel Pipe
	Channel
	Stream
	Crossline Pipe
	Driveway Pipe
	Lateral
	Lateral Pipe
	River
	Road Pipe
	Roadside
	Roadside Pipe



1 inch = 96 feet